



ESTATE AGENTS

www.cwestateagents.co.uk



## 21 Thirlmere Close, Winsford CW7 3SN

Offers in excess of £210,000



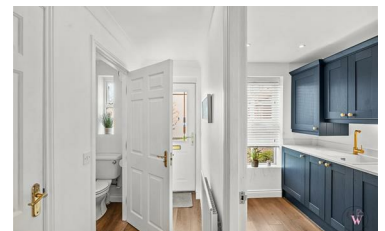
Ohhh get ready, because this one is an absolute gem!

If you've been searching for something beautifully presented with a gorgeous new kitchen, spacious rooms, and that all-important walk-in dressing room... then stop scrolling—this is the one!

Welcome to Thirlmere Close, tucked away on a lovely small cul-de-sac with parking—perfect for that peaceful, tucked-away feel while still being close to everything you need.

Step inside and you're greeted by a welcoming hallway, handy downstairs WC, and a stylish kitchen with integrated appliances—ideal for modern living. To the rear, you've got a fantastic lounge diner with French doors opening out onto a beautiful garden, just perfect for entertaining or those summer evenings. Up to the first floor, you'll find two generous double bedrooms and a family bathroom—plenty of space for family, guests or even a home office.

- Walk In Dressing Room From Bedroom One
- Cul de Sac Location
- Modern Kitchen Fitted In The Last Year
- Three Double Bedrooms
- Beautifully Presented Throughout
- No Onward Chain



01606 514 152 info@cwestateagents.co.uk

@CWestateAgent @CWestateAgents